

3 POSITION A/O/M CAM SWITCH FOR 24v & / or 0-10vdc INTERLOCKS



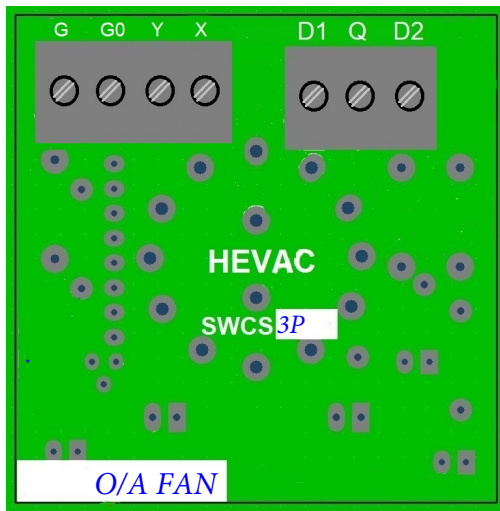
SWCS-3P

3 POSITION DOUBLE GANG CAM SWITCH

- Made in Australia to Australian Standards.
- 3 Position Cam DP3T Switch (dual 3 position circuits).
- Independant DC volt & Digital Auto / Off / Manual outputs
- Onboard 12vdc supply for manual DC output source
- DC maximum output trimmable onboard.
- Standard typical 50mm switchboard cam switch size.

APPLICATION

The SWCS-3P is a double gang three position cam switch, suitable for Auto / Off / Manual switching for both a low voltage 24v (max.) circuit & / or a DC (0-10v) signals. Each gang can be used only or both gangs used as would be typical for a VSD type A/O/M control station.

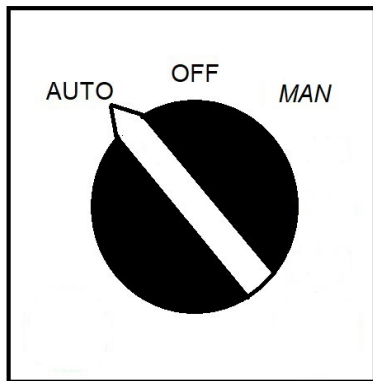


TERMINAL LEGEND

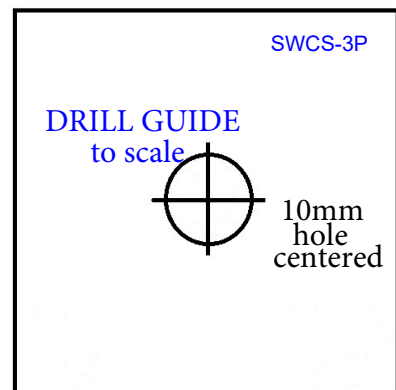
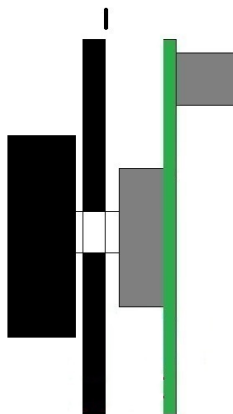
- G 24v ACTIVE
- G0 24v NEUTRAL
- Y DC OUTPUT SIGNAL
- X DC INPUT FROM AUTO FEED
- D1 MANUAL POSITION 24v RUN INPUT
- Q ENABLE OUTPUT TO CONTROLLED DEVICE
- D2 AUTO POSITION 24v RUN INPUT

DIMENSIONS

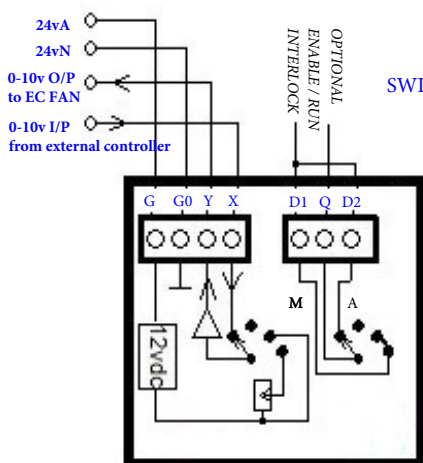
50mm SQUARE



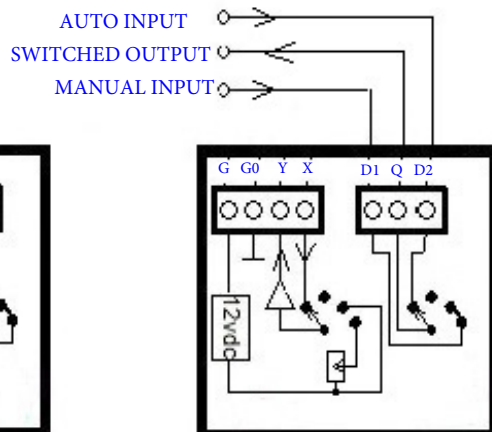
25mm 35mm



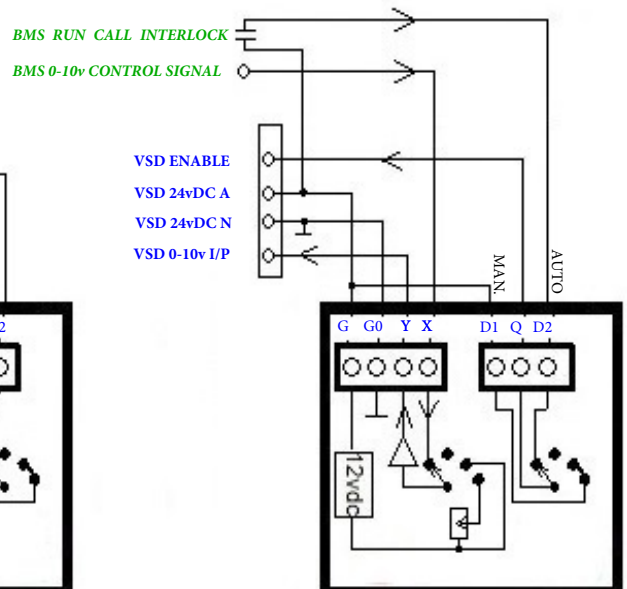
POWER SUPPLY CAN BE 24v AC or DC



EC FAN A / O / M
CONTROL SWITCH



BASIC A / O / M
CONTROL SWITCH



VSD A / O / M
CONTROL SWITCH

The D1 to Q connection makes in the Manual position, D2 to Q connection makes in the Auto position.

Hevac does NOT offer or suggest this product is suitable for direct interlocks for use in fire mode control operation. For maximum compliance & safety we recommend : for forced run fire mode operation, breaking the signal from this cam switch and connecting a fire mode set of relay contacts as required directly to the controlled device.