

## LT-MECF-240v

### MANUAL EC FAN SPEED or DAMPER POSITIONER CONTROL MODULE

#### Features

---

- Australian Made and designed
- Separate minimum output setting
- LED Indication of output
- Powered by 240vAC
- DIN Rail mount

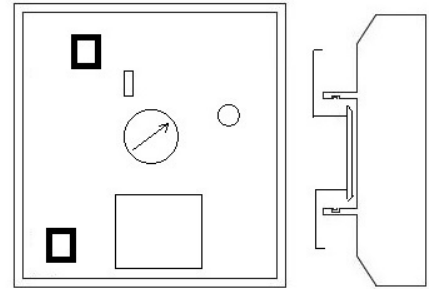
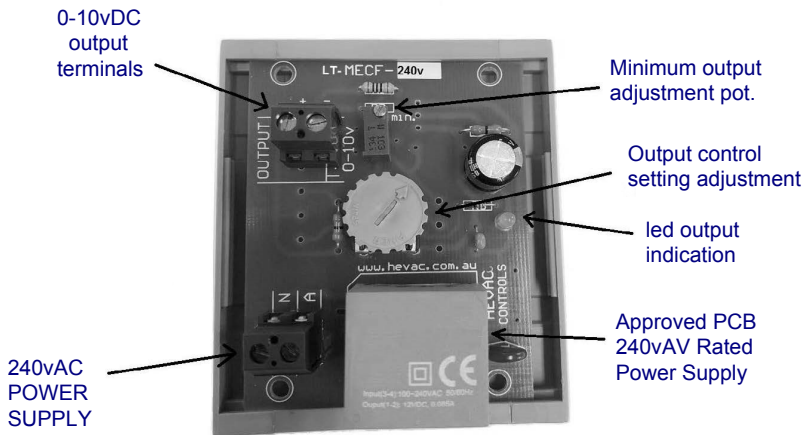
#### Use

---

The LT-MECF-240v is a low cost mains powered din rail mount module for manual speed setting to an EC fan or 0-10v controlled motorised dampers. The module has a separate adjustment for the minimum main adjustment speed (or position) setting.



**Made in Australia**  
**100% Australian Owned Company**



68mmW x 77mmHx32mmD

## connection examples

