



HVS2

VSD SEQUENCER

Features

- Power Supply can be 24VAC or DC
- 0-10vdc Signal Booster
- 0-10vdc Signal Double
- 0-10V Input Switching Relay
- Adjustable Relay Turn On Point
- Each Signal Conditioner Has Separate I/O
- Mounts In Most M.C.B Din Rail Enclosures
- Inputs & Outputs Diode Clamp Protected
- Inputs & Outputs Current limited (series resistor)

Use

The **HVS2** is intended for applications where 2 VSD's (or groups of VSD's) have to operate in sequence from one 0-10v source, the original signal is split in to 2 sequenced equal 0-10v signals.

The module incorporates :

One 0-10vdc **Signal Booster** input (X1) useful for when the load on a Y signal exceeds its output power capabilities (typically 3 drives) ..example : several VSD's or damper motors driven from one 0-10v signal. 3 parallel outputs (Y1, Y2 & Y3) are available from the common X1 input, each capable of driving loads of 1 mA at 10vDC (>10k ohm load) each.

One 0-10vdc **Signal Doubler** - generating in sequence two 0-10vdc output signals from input X2 . 0 - 4.8 = 0-10vdc on Y4, and 5.2 - 10v = 0 to 10vdc on Y5. One 0-10vdc **Controlled Relay**. Input X4 controls a relay c/w c/o contacts rated at 8 amps (resistive).

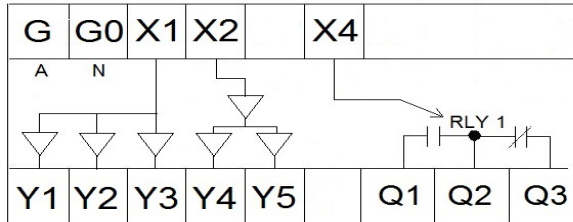
An expanded version of this module with extra I/O is the SEZ-HAUX series of expansion modules. To drive large numbers of VSD's also see HYS4.



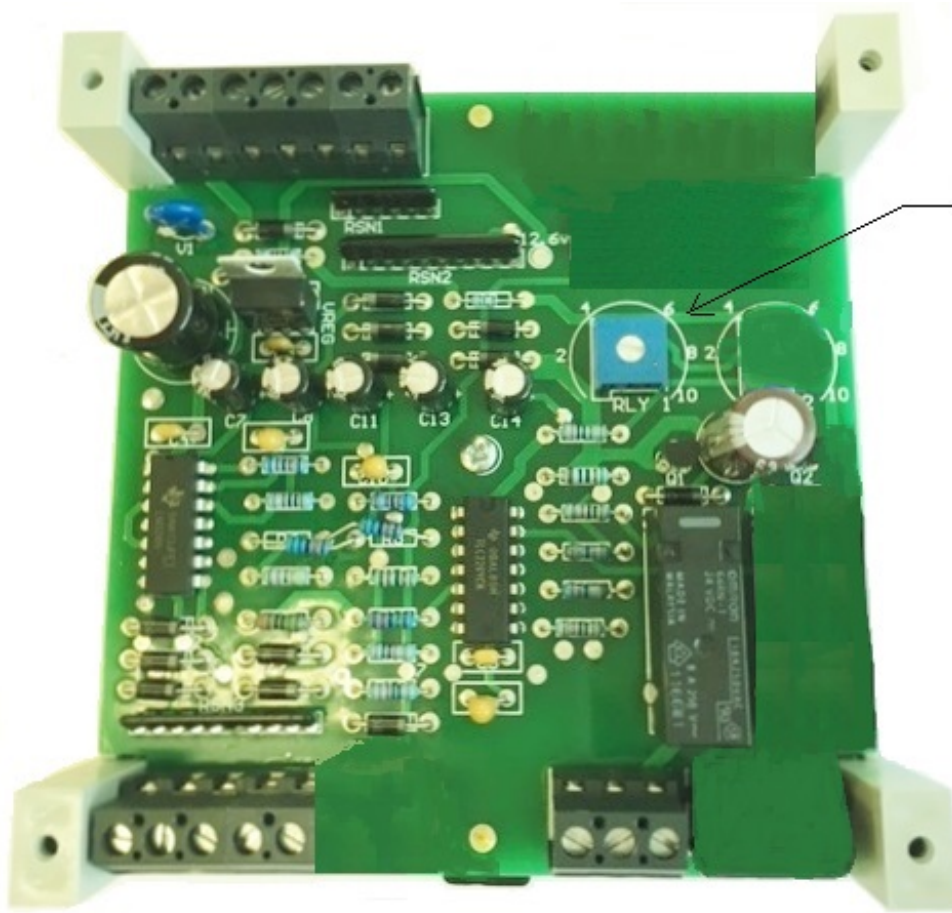
Made in Australia
100% Australian Owned Company

General Specifications	Operating Voltage	24 Volts AC or DC
	Power Consumption	
	At 24vAC	2.5 VA
	At 24vDC	100 mA
	Input Terminals	
	Signal Input Voltage's	0-10 Volts DC
	inputs signal load	0.3ma
	Analogue outputs	
	ouput signals	0-10 Volts DC
	output load ea.	1 mA@ 10vDC
Relay Outputs		
	1 x Potential free SPDT rated at 8 Amps resistive / 2 Amps inductive	
	ON Point Adjustment	1V to 9.5 Volts DC
	Switching differential	fixed at 0.5 volts
Environmental Conditions	Operation	
	Ambient Temperature	0...45oC
	Humidity	< 85 % RH (Non Condensing)
	Storage and Transport	
	Ambient Temperature	-5...65oC
	Humidity	< 90 % RH (Non Condensing)
Weight	Including Packaging	200 grams
Housing	Colour	Grey
	Material	ABS POLYCARB
	UV Stabilised	YES
	Fire Retardant	YES
	Size	L105mm x W105mm x D60mm
	Mounting Method	35mm Din Rail Mountable

Terminal Designations



- G 24 Volt Supply Active
- G0 24 Volt Supply Neutral / Ground Reference
- X1 Signal Booster Input
- X2 Signal Doubler Input
- X4 Relay Control Input
- Y1 Booster Output 1
- Y2 Booster Output 2
- Y3 Booster Output 3
- Y4 Signal Doubler Output 1
- Y5 Signal Doubler Output 2
- Q1 Relay N/O Contact
- Q2 Relay Common
- Q3 Relay N/C Contact



RELAY TURN ON
POINT ADJUSTMENT

