

STAGING RELAY for HEVAC HTC Analogue Controllers 2 Heat 2 Cool + Econ. O/P

HRC- 4DE

Features

- Australian Made and designed
- Power Supply can be either 24V or 240V AC
- 10 Amp (Resistive) Potential free relay contacts
- Adjustable Stage Start points for all relays
- LED Indication of all outputs
- Mounts in most M.C.B din rail enclosures
- Compatible with the HEVAC HTC Analogue Controller Range

Use

The HRC-4DE Staging Relay is intended for use with the Slave Output on the HTC Analogue Range of Controllers.

The HRC-4DE allows you to expand any HTC Analogue Controller with an additional Two Heating and Two Cooling Stages with the additional feature a modulating economy cycle output that is subject to the fresh air temperature being measured to be cooler then either the room or R/A temperature.

All output relays are voltage free permitting use on either 240 Volt or 24 Volt circuitry.

Stage switch on points are individually adjustable with their ON/OFF status displayed via LED indicators.



Made in Australia
100% Australian Owned Company

General Specifications

Operating Voltage	24 Volts AC or 240 Volts AC
Power Consumption	
At 240 Volts	7 VA
At 24 Volts	1 VA
Switching Capacity of Relays	
Voltage	AC 0...250 Volts
Current	10 (3) Amps
Input Terminal	
Input Terminal Voltage	DC 0...10 Volts
Input Terminal Voltage Range vs Setpoint	0V at 16oC...10V at 28oC
Input Terminal Voltage Range	0...10 Volts over the entire Setpoint Range coming from the controller feeding the HRC4
Stage Dead Zone	1.0o Celsius (Factory Set)
Stage Start Point Adjustment	0.5...5.0 oC
Switching Differential Stage 1	0.3 oC (NON Adjustable)
Switching Differential Stage 2	0.7 oC (NON Adjustable)
Output Indication	
Heating	2 x Red LED's
Cooling	2 x Green LED's
Econ. O/P	1 x Yellow LED

Environmental Conditions

Operation	
Ambient Temperature	0...45oC
Humidity	< 85 % RH (Non Condensing)
Storage and Transport	
Ambient Temperature	-5...65oC
Humidity	< 90 % RH (Non Condensing)

Product Standards

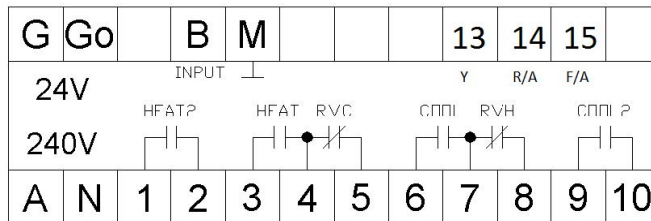
C-tick	 N10842
--------	--

Weight

Including Packaging	450 grams
---------------------	-----------

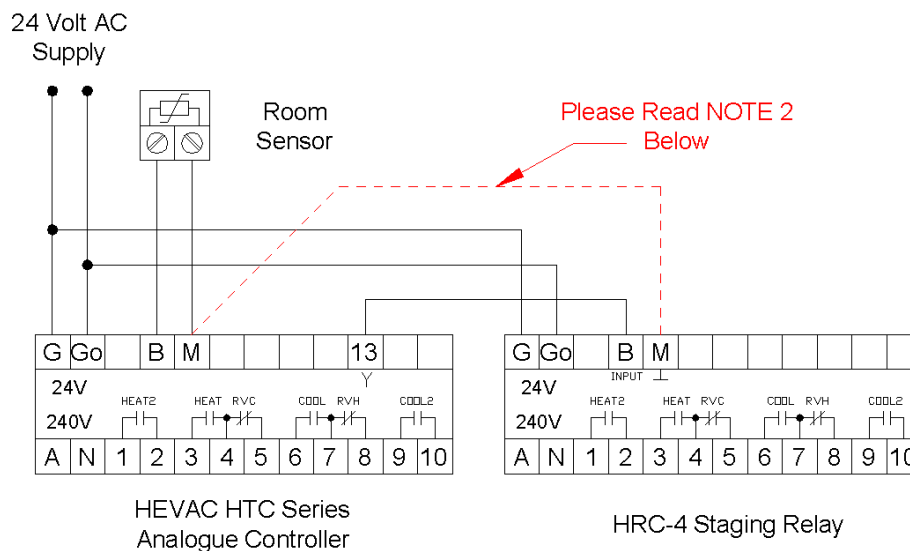
Housing

Colour	Grey
Material	ABS POLYCARB
UV Stabilised	YES
Fire Retardant	YES
Size	L105mm x W105mm x D60mm
Mounting Method	35mm Din Rail Mountable



- G 24 Volt AC Supply Active
- Go 24 Volt AC Supply Ground Reference
- B 0-10VDC Input from HTC Controller Input
- M Signal Common/Ground
- A 240 Volt AC Supply Active
- N 240 Volt AC Supply Neutral
- 1 Heating Stage 2 Common
- 2 Heating Stage 2 Output
- 3 Heating Stage 1 Output
- 4 Heating Stage 1 & R/V for Cool Common
- 5 Reversing Valve for Cool Output Cooling
- 6 Stage 1 Output
- 7 Cooling Stage 1 & R/V for Heat Common
- 8 Reversing Valve for Heat Output Cooling
- 9 Stage 2 Common
- 10 Cooling Stage 2 Output
- 13 Modulating Economy Cycle Output
- 14 Return Air or Room Sensor
- 15 Fresh Air Sensor

Application Example (1)



Technical Notes

- Supply Voltage (Note 1) The Controller requires either a 240Volt AC or 24 Volt AC Supply Above diagram depicts a 24 VAC Connection
- Supply Voltage (Note 2) If the HRC-4E and the HTC Controller are powered from a 240 Volt AC Supply then a link must be connected as shown above
- Warnings Use ONE Supply Voltage Only Either 240 or 24 Volts AC