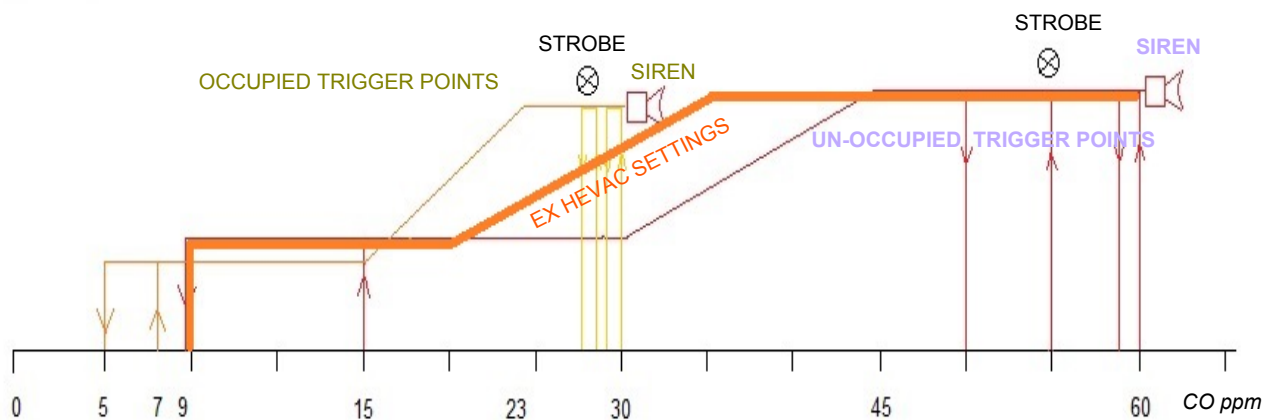


AS1668.2 - 2012 COMPLIANCE

*****NOTE ***:** AS1668.2-2012 Calls for CO ppm sensor response to be based on a Time Weighted Average (TWA) set over an 8 hour period, and with different O/P trigger values depending on the space being used as an occupied or unoccupied CarPark. Hevac has found that although the specified settings for unoccupied carparks satisfy the health & safety standards and conserve energy, they give poor comfort response to sudden build up of annoying fumes from an idling car or forklift etc, So as a reasonable compromise, Hevac has preset the HCP7 controller to exceed the AS1668.2 requirements, using the controllers "CUSTOM" programming menu to set outputs as follows : The **Fan Enable** relay (R1) is set to respond to "current value" (CV not TWA) with a 1 minute ON delay, the **VSD ramp** to start from **20ppm & ramp to 35ppm**, **High speed** relay to energize at **35ppm & off at 20ppm**, the **Strobe** light O/P also set to **CV** (not TWA) as an early warning of high CO or NO2 contaminants & the Audible Alarm O/P's set to use TWA measurement. We have also chosen to set the **TWA to average over 1 hour** not 8hrs. The site commissioning technician can change most settings (with the custom menu) or select one of the inbuilt preset occupied or un-occupied programs that fully comply to the standards, but compliance to meet minimum standards then shifts from HEVAC to the programmer. **Note** : AS1668.2-2012 no longer calls up the use of NO2 sensors, although HEVAC still recommends their system inclusion particularly when many diesel trucks or cars use the parking facilities. The "CONFIGURE" menu for editing is password protected please contact our office on 0395627888 or refer to the supplied programming manual. A 3rd party Modbus connected monitoring / data logging module c/w web interface is also available if required. The standards call for the maximum distance between sensor locations not to exceed 25 meters with sensors mounted between 750mm & 1800mm above floor level. Please refer to the standards for other criteria that affect system compliance.

IT SHOULD BE NOTED THAT THE CODE DOESNT ACTUALLY CALL UP THE REQUIREMENT OF A STROBE LIGHT , THIS HAS BEEN A TRADITION THAT CONTROL SUPPLIERS HAVE ALSO SUPPLIED AND SET TO TRIGGER AS AN EARLY WARNING BEFORE THE REQUIRED SIREN TRIGGER POINT IS REACHED.



THE CODE ALSO CALLS UP FORCED RUNNING OF THE FAN SYSTEM TO MEET MINIMUM VENTILATION REQUIREMENTS IN A 24HR PERIOD. AS SUCH THE HCP7 INCLUDES AN IDLE TIMER THAT TRIGGERS FAN OPERATION FOR 10 MINUTES (ADJUSTABLE) IF THE FAN SYSTEM HASNT STARTED IN THE PREVIOUS 24HRS (ADJUSTABLE).



*** NOTE : THE CONTROLLER IS DELIVERED PRESET USING SETTINGS FROM THE "CUSTOM" MENU AS PER HEVAC RECOMMENDATIONS & EXCEED AS1668.2 REQUIREMENTS NO2 SETTINGS ARE BASED ON HEVAC RECOMMENDATIONS.**

UNOCCUPIED MODE FACTORY FIXED SETTINGS (using 8Hr TWA) (as per AS1668.2)

FIXED PRESET SETTINGS FOR 2 SPEED FAN OUTPUT (LOW / HIGH)

RELAY 1 TWA LOW SPEED ON > 15 ppm OFF < 9ppm CO / ON > 2ppm OFF < 1.5ppm NO2 / 1 Min. ON DELAY/ 5 Min OFF DELAY
 RELAY 2 TWA HIGH SPEED ON > 45 ppm OFF < 30ppm CO / ON > 3ppm OFF < 2.5ppm NO2 / 2 Min. ON DELAY/ 5 Min OFF DELAY
 RELAY 3 TWA STROBE ON > 55 ppm OFF < 50ppm CO / ON > 3.5ppm OFF < 3ppm NO2 / 1 Min. ON DELAY
 RELAY 4 TWA SIREN ON > 60 ppm OFF < 55ppm CO / ON > 4ppm OFF < 3ppm NO2 / 4 Min. ON DELAY

FIXED PRESET SETTINGS FOR VSD CONTROLLED FANS

RELAY 1 TWA LOW SPEED ON > 15 ppm OFF < 9ppm CO / ON > 2ppm OFF < 1.5ppm NO2 / 1 Min. ON DELAY/ 5 Min OFF DELAY
 Y1 0-10v TWA VSD RAMP 100% > 45 ppm - Min < 30 ppm CO / 100% > 3ppm - Min < 2ppm NO2 / + Integral time = 60 Minutes
 RELAY 2 TWA HIGH SPEED ON > 60 ppm OFF < 55ppm CO / ON > 3ppm OFF < 2.5ppm NO2 / 2 Min. ON DELAY/ 5 Min OFF DELAY
 RELAY 3 TWA STROBE ON > 55 ppm OFF < 50ppm CO / ON > 3.5ppm OFF < 3ppm NO2 / 1 Min. ON DELAY
 RELAY 4 TWA SIREN ON > 60 ppm OFF < 55ppm CO / ON > 4ppm OFF < 3ppm NO2 / 4 Min. ON DELAY

OCCUPIED MODE FACTORY FIXED SETTINGS (using 8Hr TWA) (as per AS1668.2)

RELAY 1 TWA LOW SPEED ON > 9 ppm OFF < 7ppm CO / ON > 2ppm OFF < 1.5ppm NO2 / 1 Min. ON DELAY/ 5 Min OFF DELAY
 RELAY 2 TWA HIGH SPEED ON > 23 ppm OFF < 15ppm CO / ON > 3ppm OFF < 2ppm NO2 / 2 Min. ON DELAY/ 5 Min OFF DELAY
 RELAY 3 TWA STROBE ON > 28 ppm OFF < 26ppm CO / ON > 3.5ppm OFF < 3ppm NO2 / 1 Min. ON DELAY
 RELAY 4 TWA SIREN ON > 30 ppm OFF < 28ppm CO / ON > 4ppm OFF < 3ppm NO2 / 4 Min. ON DELAY

FIXED PRESET SETTINGS FOR VSD CONTROLLED FANS

RELAY 1 TWA LOW SPEED ON > 9 ppm OFF < 7ppm CO / ON > 2ppm OFF < 1.5ppm NO2 / 1 Min. ON DELAY/ 5 Min OFF DELAY
 Y1 0-10v TWA VSD RAMP 100% > 23 ppm - Min < 15 ppm CO / 100% > 3ppm - Min < 2ppm NO2 / + Integral time = 60 Minutes
 RELAY 2 TWA HIGH SPEED ON > 30 ppm OFF < 28ppm CO / ON > 3ppm OFF < 2.5ppm NO2 / 2 Min. ON DELAY/ 5 Min OFF DELAY
 RELAY 3 TWA STROBE ON > 28 ppm OFF < 26ppm CO / ON > 3.5ppm OFF < 3ppm NO2 / 1 Min. ON DELAY
 RELAY 4 TWA SIREN ON > 30 ppm OFF < 28ppm CO / ON > 4ppm OFF < 3ppm NO2 / 4 Min. ON DELAY

*** CUSTOM MODE EX HEVAC DEFAULT SETTINGS (exceeds AS1668.2)**

Note : TWA changed to 1hr (not 8hr), & FAN ENABLE & STROBE O/P's SET TO USE "CV" (not TWA) .

FIXED PRESET SETTINGS FOR 2 SPEED FAN OUTPUT (LOW / HIGH)

RELAY 1 CV LOW SPEED ON > 15 ppm OFF < 9ppm CO / ON > 2ppm OFF < 1.5ppm NO2 / 1 Min. ON DELAY/ 5 Min OFF DELAY
 RELAY 2 TWA HIGH SPEED ON > 35 ppm OFF < 20ppm CO / ON > 3ppm OFF < 2.5ppm NO2 / 2 Min. ON DELAY/ 5 Min OFF DELAY
 RELAY 3 CV STROBE ON > 55 ppm OFF < 50ppm CO / ON > 3.5ppm OFF < 3ppm NO2 / 1 Min. ON DELAY
 RELAY 4 TWA SIREN ON > 60 ppm OFF < 55ppm CO / ON > 4ppm OFF < 3ppm NO2 / 4 Min. ON DELAY

FIXED PRESET SETTINGS FOR VSD CONTROLLED FANS

RELAY 1 CV LOW SPEED ON > 15 ppm OFF < 9ppm CO / ON > 2ppm OFF < 1.5ppm NO2 / 1 Min. ON DELAY/ 5 Min OFF DELAY
 Y1 0-10v TWA VSD RAMP 100% > 35 ppm - Min < 20ppm CO / 100% > 3ppm - Min < 2ppm NO2 / + Integral time = 60 Mins.
 RELAY 2 TWA HIGH SPEED ON > 60 ppm OFF < 55ppm CO / ON > 3ppm OFF < 2.5ppm NO2 / 2 Min. ON DELAY/ 5 Min OFF DELAY
 RELAY 3 CV STROBE ON > 55 ppm OFF < 50ppm CO / ON > 3.5ppm OFF < 3ppm NO2 / 1 Min ON DELAY
 RELAY 4 TWA SIREN ON > 60 ppm OFF < 55ppm CO / ON > 4ppm OFF < 3ppm NO2 / 4 Min. ON DELAY

*****CHANGING EX HEVAC SETTINGS SHIFTS RESPONSABILITY FOR COMPLIANCE TO AUSTRALIAN STANDARDS FROM HEVAC TO THE COMMISSIONING PERSONAL***. Using "CUSTOM" mode most settings are user adjustable.**

(NOTE : UNDER VSD CONTROL, RELAY 2 INTERNALLY TAKES ON RELAY 4 TRIGGER SETTINGS AS AN OPTIONAL ALARM OUTPUT i.e. as an override fixed speed input into the VSD)

"TIME WEIGHTED AVERAGE" (TWA) is a method used to average out sensor readings to produce an average output value calculated over a set period, whereas "CURRENT VALUE" (CV) produces the actual current real time sensor value. To save energy & meet minimum safety requirements AS1668.2 calls up the use of TWA measured over an 8 hour period, Most CO control systems on the market tend to ignore this and can only respond to current value (which exceeds requirements but uses more energy). This controller can be set to use any combination of TWA or CV for the various outputs. The controller can also be set to force ON fan operation between several configurable blocks of time, intended for use when high periods of traffic are expected and to save cycling and fume build up. The controllers internal time switch is factory preset to force fan operation Monday to Friday in the morning between 7am till 9am and in the evening between 5pm till 7pm (adjustable). **To enable** this feature an external **link** or switch must also be **connected** between terminals "M" & "D3". This input can alternatively be used as a forced fan run input (for example) from a switch, a movement sensor (with built in run on timer) or & a thermostat, forced fan run speed is programmable.

The controller also makes use of an "Idle Run Timer" routine that keeps track of the last fan operation time and automatically starts the fan to satisfy minimum ventilation requirements. The preset factory settings force fan ON operation after 24 hours of idle time and then to run for 10 minutes, both gap & duration settings are user adjustable. HEVAC have also included a feature to Inhibit this forced ON operation by use of an internal time switch, which blocks the Idle Timer triggering fan operation between certain hours so as not to cause unnecessary noise (for example) during night hours in an apartment building. The factory settings for this inhibit timer is to block operation between the hours of 10pm till 9am, Note: This inhibit routine does not stop a genuine fan start call due to a build up of CO or NO2 which is enabled to operate 24/7 as per the code.

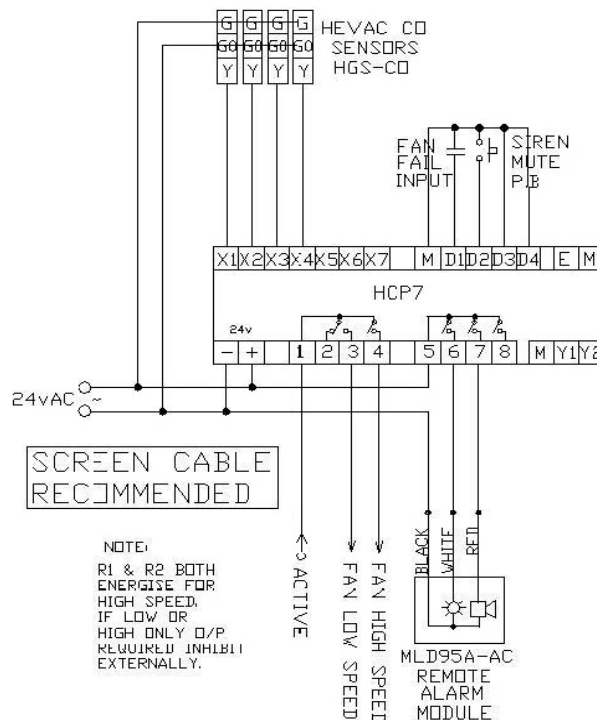
The number of connected sensors and the sensor measurement maximum value (allowing other brand of sensors to be used) are user adjustable in the menu system under the password protected "CONFIGURE CONTROLLER" sub menu. Please contact HEVAC on 039562788 for the password to edit values.

Analog output "Y2" is factory preset as a 10vDC output signal source for use (as example) as a EC fan full speed signal source via a "Auto/Manual" selector switch or for use as a sensor I/P test = full scale.

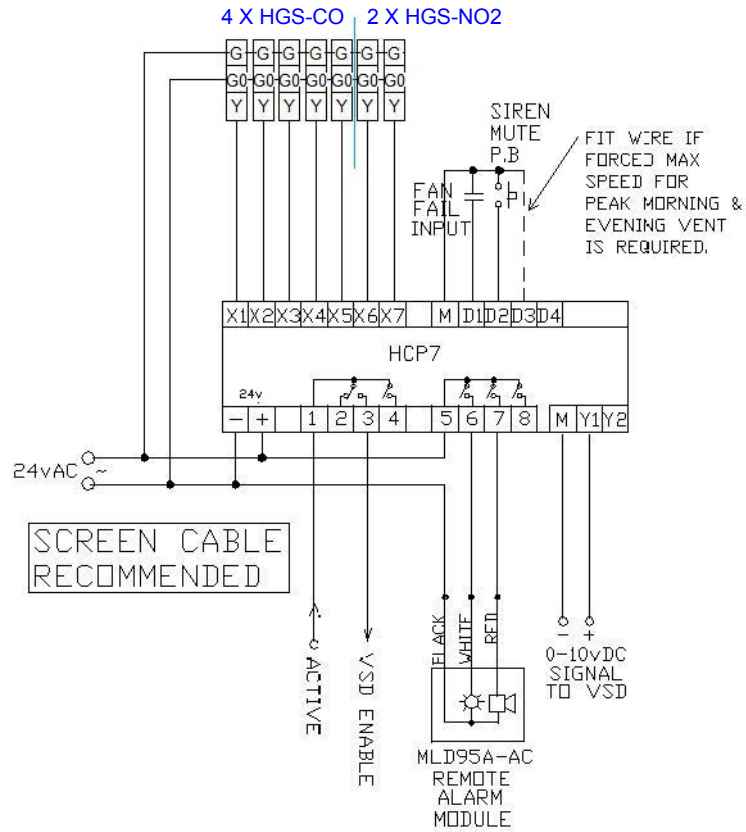
A new feature recently added now gives this controller simple data logging for event triggers to help diagnose faults and system behaviour. Also added for optional use is Relay 5 now acts as an "I'm OK" output which holds relay 5's contacts closed when the controller has power and is operating correctly.

This is a basic guide only, For complete editing & setup instructions please refer to the programming manual.

Application Example (1) 4 HEVAC HGS-CO SENSORS CONNECTED using 2 SPEED LO-HI FAN CONTROL



Application Example (2) 4 X HEVAC CO SENSORS & 2 X HEVAC NO2 SENSORS c/w MODULATING VSD OUTPUT



Application Example (3) 14 DWYER CO SENSORS , c/w MODULATING VSD OUTPUT

