

Actual Size

FIGM6

6 x DPDT 24vAC/DC RELAYS

C/W AUTO/OFF/MANUAL
SWITCHES & STATUS LEDS

24V RELAY INTERFACE

Features

- 6 INDEPENDENT I/O CIRCUITS
- AUTO/OFF/MANUAL O/P CONTROL
- LED INDICATION OF RELAY STATUS
- 6 X DUAL C/O CONTACT RELAYS (DPDT)
- 0.5 Amp RELAYS rated at 240vAC
- DIFFERENT O/P VOLTAGE GROUPS (2 X3)
- DIN RAIL MOUNT.

Use

The FIGM6 is purpose built as a 6 channel 24v powered relay interface module allowing control of 6 independent input / output control interlock circuits. The 6 relays respond to switched 24vAC or DC inputs from external control interlocks that control 6 on board double pole c/o relays. Each relay has 2 c/o sets of contacts which allow connection to 2 output circuits ..ie to operate a drive open/drive close damper motor & an indicating lamp. Each relay is also subject to an on board Auto / Off / Manual control switch to assist in circuit setup & testing.

Made in Australia
100% Australian Owned Company



Technical Data

Electrical Specifications

<u>Input Power Supply</u>	24vAC +/- 10% OR 24vDC +/- 5% @ 8mA per input
<u>Output Indication</u>	6 x 3mm red led (1 per input) On = Relay energized
<u>Input Terminals</u>	24v sourced from "G" terminal or from an external 24v source but linked & referenced to the "GO" terminal.
<u>Voltage free Relay outputs</u>	1 Amp @ 24vac , 0.5 Amp @ 240v

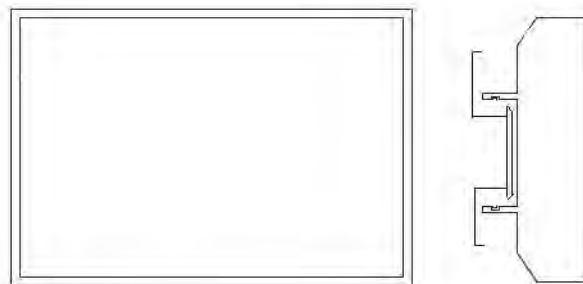
Note : Due to the close proximity of output circuit board tracks between relay and connection terminals etc, and in keeping with Australian electrical segregation safety regulations, DO NOT mix voltages on or between relay groups , ie if one set of c/o relay contacts is switching a 24vAC circuit, the other c/o contact set or a nearby relay cannot switch a 240vAC circuit. However the relays have been arranged with segregation between the 2 sets of 3 relays, allowing for example one set of 3 relays to switch 24vAC circuits and the other set to switch 240vAC circuits.

Environmental Conditions

Operation	
Ambient Temperature	0...45oC
Humidity	< 85 % RH (Non Condensing)
Storage and Transport	
Ambient Temperature	-5...65oC
Humidity	< 90 % RH (Non Condensing)

Weight	Including Packaging	250 grams
--------	---------------------	-----------

Housing	Colour	Green
	Material	ABS POLYCARB
	UV Stabilised	YES
	Fire Retardant	YES
	Size	L83mm x W115mm x D53mm
	Mounting Method	35mm Din Rail Mountable

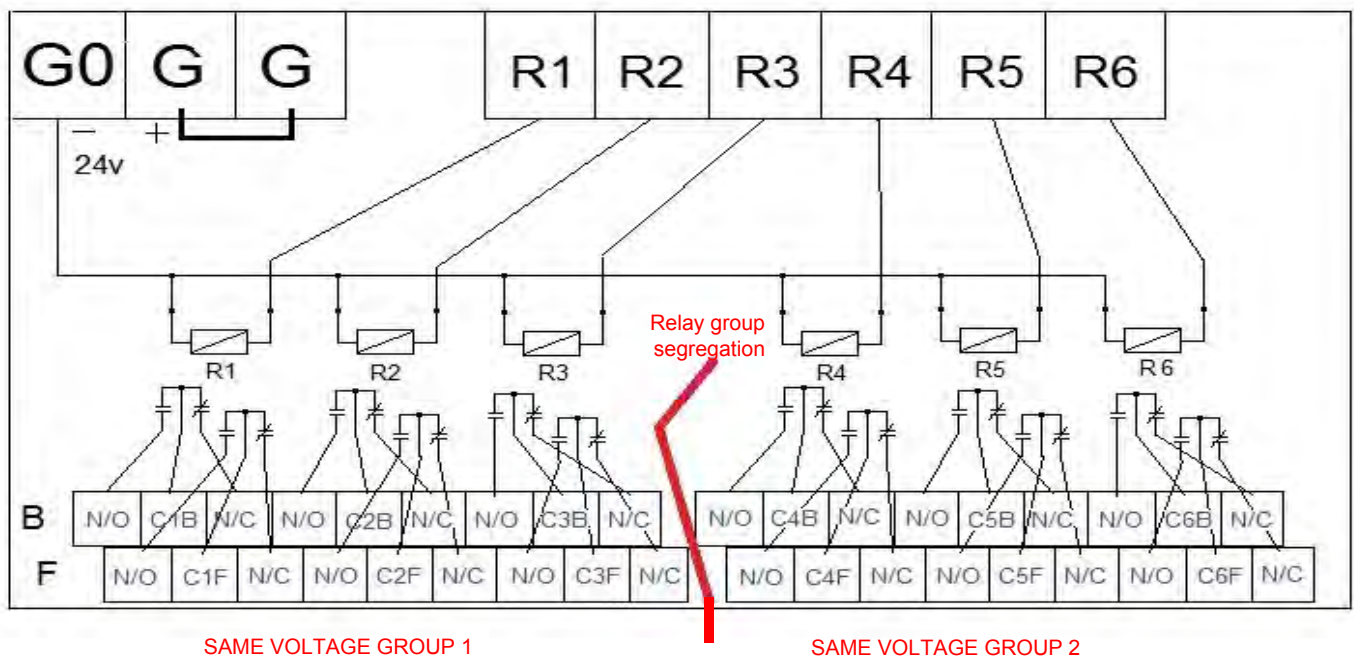


L 83mm W115mm D 53mm

Terminal Designations

- GO 24v NEUTRAL supply
- G 24v ACTIVE supply
- G 24v ACTIVE used to connect to external interlocks

- R1 Relay 1 24v Active Control Input
- R2 Relay 2 24v Active Control Input
- R3 Relay 3 24v Active Control Input
- R4 Relay 4 24v Active Control Input
- R5 Relay 5 24v Active Control Input
- R6 Relay 6 24v Active Control Input



Relay 1 N/O Back Contact
 Relay 1 C1B Back Common
 Relay 1 N/C Back Contact
 Relay 1 N/O Front Contact
 Relay 1 C1F Front Common
 Relay 1 N/C Front Contact

Relay 2 N/O Back Contact
 Relay 2 C2B Back Common
 Relay 2 N/C Back Contact
 Relay 2 N/O Front Contact
 Relay 2 C2F Front Common
 Relay 2 N/C Front Contact

Relay 3 N/O Back Contact
 Relay 3 C3B Back Common
 Relay 3 N/C Back Contact
 Relay 3 N/O Front Contact
 Relay 3 C3F Front Common
 Relay 3 N/C Front Contact

Relay 4 N/O Back Contact
 Relay 4 C4B Back Common
 Relay 4 N/C Back Contact
 Relay 4 N/O Front Contact
 Relay 4 C4F Front Common
 Relay 4 N/C Front Contact

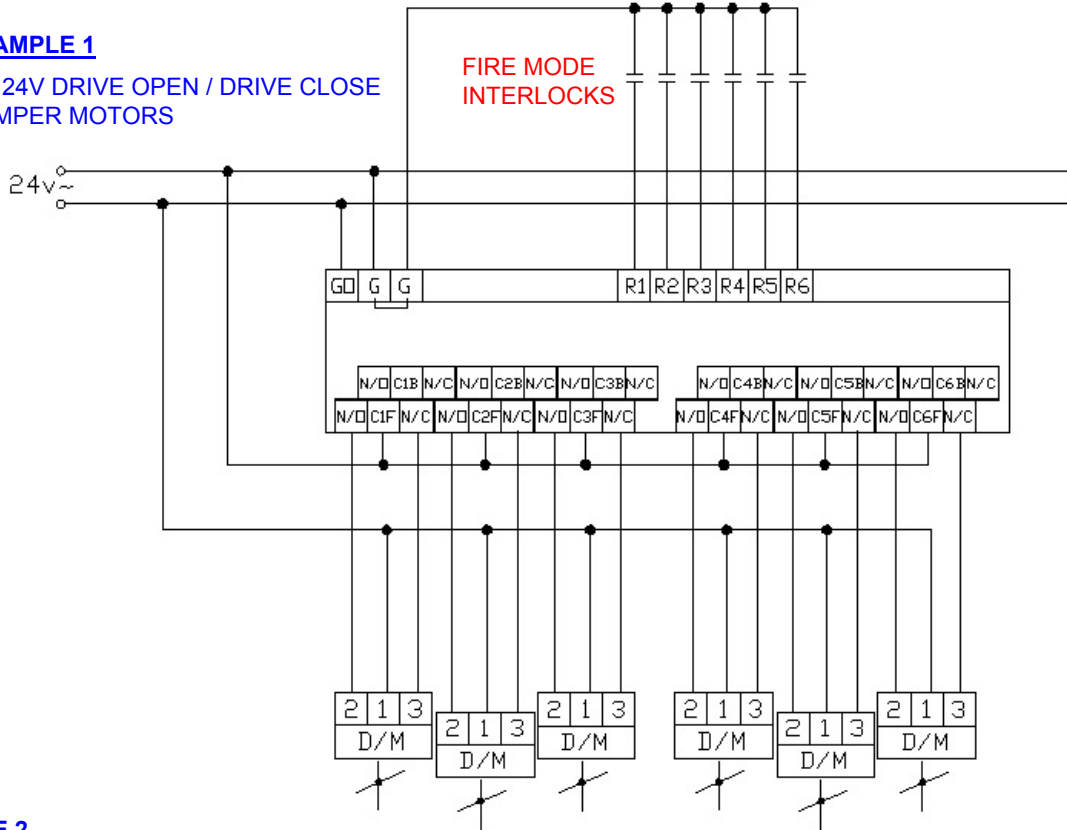
Relay 5 N/O Back Contact
 Relay 5 C5B Back Common
 Relay 5 N/C Back Contact
 Relay 5 N/O Front Contact
 Relay 5 C5F Front Common
 Relay 5 N/C Front Contact

Relay 6 N/O Back Contact
 Relay 6 C6B Back Common
 Relay 6 N/C Back Contact
 Relay 6 N/O Front Contact
 Relay 6 C6F Front Common
 Relay 6 N/C Front Contact

Application Examples

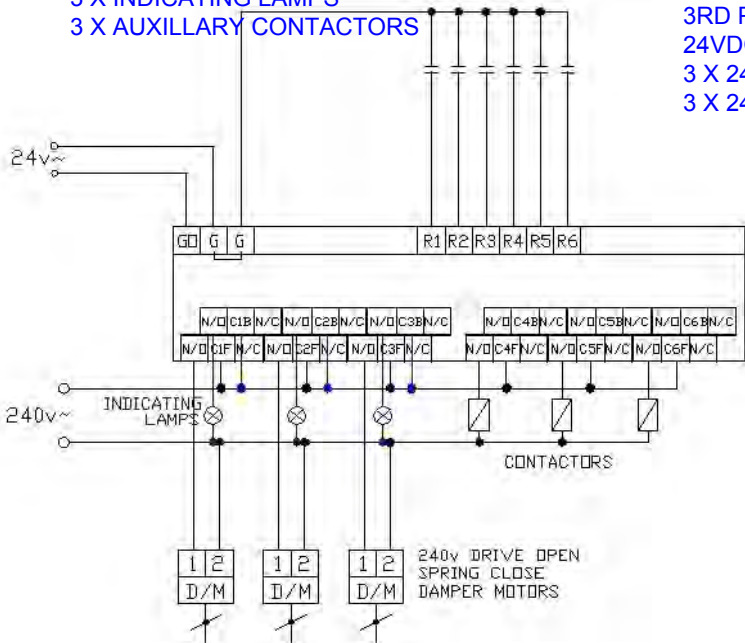
EXAMPLE 1

6 X 24V DRIVE OPEN / DRIVE CLOSE DAMPER MOTORS



EXAMPLE 2

3 X 240V S/R DAMPER MOTORS
3 X INDICATING LAMPS
3 X AUXILLARY CONTACTORS



EXAMPLE 3

3RD PARTY CONTROLLER WITH
24VDC OUTPUTS
3 X 240V S/R DAMPER MOTORS
3 X 24V S/R SHUT OFF VALVES

