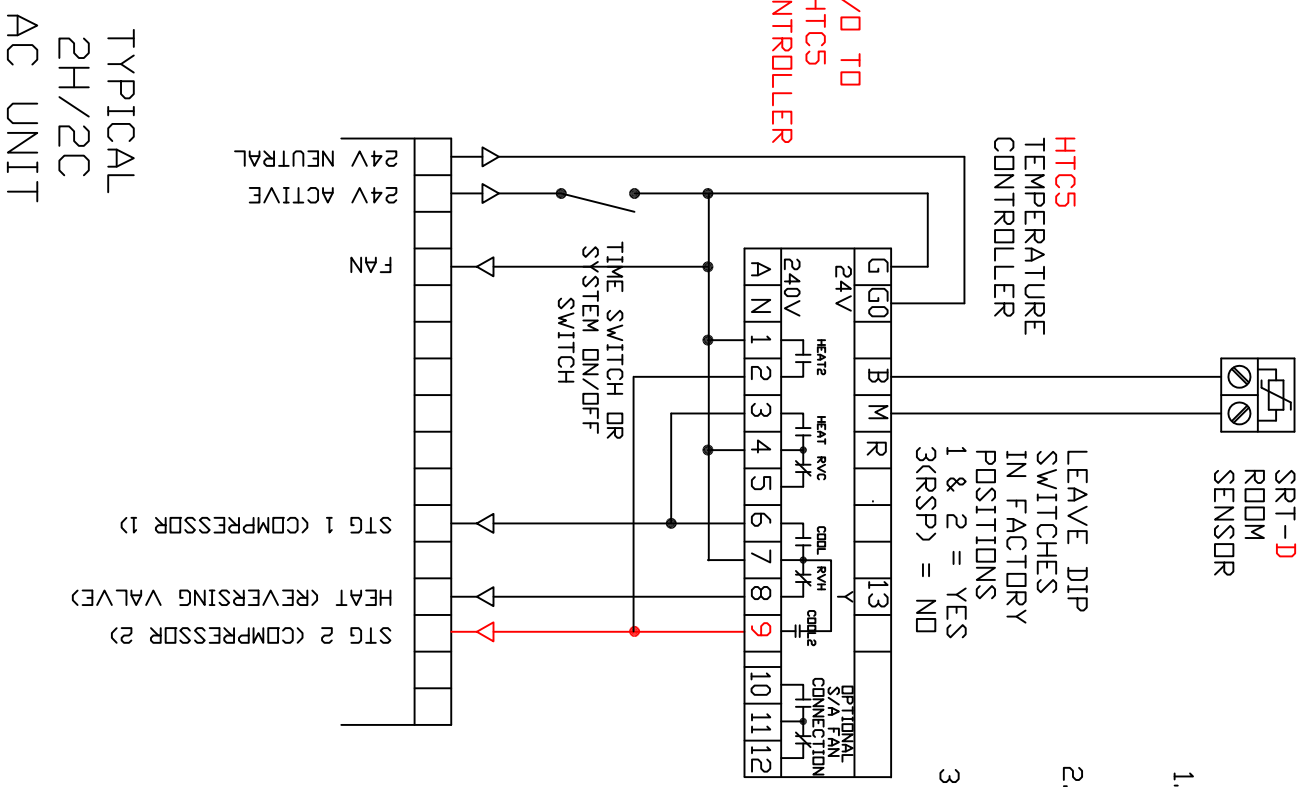
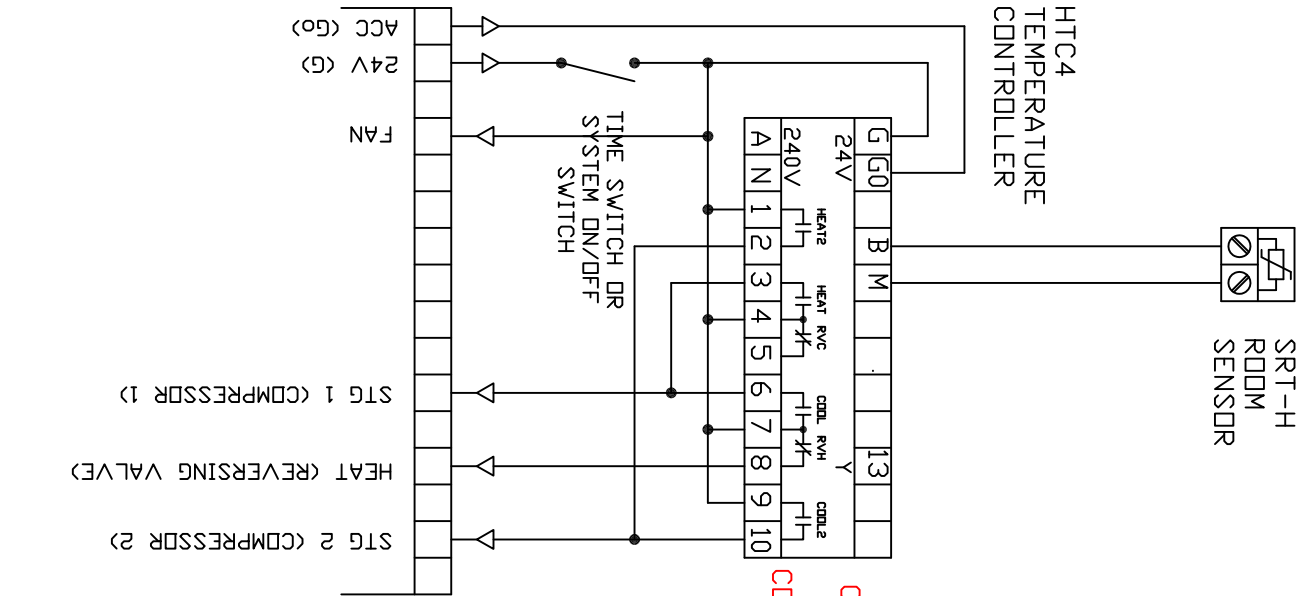
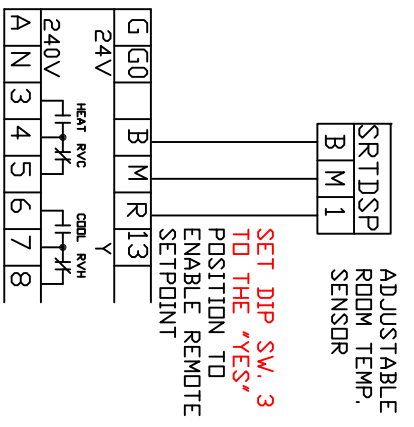


TYPICAL
2H/2C
AC UNIT



- OTHER NOTES :**
- 1.) TO REPLACE EXISTING HTC4 CONTROL SYSTEM WITH A HTCS , A NEW SENSOR WILL ALSO BE REQUIRED TYPE SRT-D.
 - 2.) IF CONTROLLER IS POWERED BY 240V THEN USE 240V POWER SUPPLY TERMINALS INSTEAD OF 24V TERMINALS.
 - 3.) IF EXISTING HTC4 USED AN ADJUSTABLE ROOM SENSOR TYPE SRT-HSP WHICH STILL ONLY USED 2 WIRES, THEN TO CHANGE OVER TO USING HTCS BUT WITH AN ADJUSTABLE SENSOR (TYPE SRT-DSP) AN ADDITIONAL FIELD WIRE WILL BE REQUIRED. IF THE EXISTING SENSOR WAS CONNECTED USING A 2 CORE SHIELDED CABLE THEN IT IS POSSIBLE TO USE THE SHIELD AS A 3RD WIRE USING THE SHIELD AS THE M (GROUND) CONNECTION.



REF:	DATE:	PROJECT REFERENCE:
DRAWN/ TREVDOR SWEETMAN	22/01/18	HTC4 > HTCS CHANGE OVER
PAGE:		CONTRACTOR: